

WAL-MART ADDITION NO. 949 LOTS 3A, 4A, 5A, BLOCK B/6930

BEING A REPLAT OF LOT 3, 4, 5, OF THE
WAL-MART ADDITION NO. 949 PHASE I LOTS 1-5,
BLOCK B/6930, ACCORDING TO THE PLAT RECORDED
IN VOL. 2003041, PG. 13873, D.R.D.C.T. AND BEING
A REPLAT OF LOT 1B, OF THE WAL-MART ADDITION
NO. 949 LOTS 1A & 1B, BLOCK B/6930 ACCORDING TO
THE PLAT RECORDED IN VOL. 2004024, PG. 72, D.R.D.C.T.

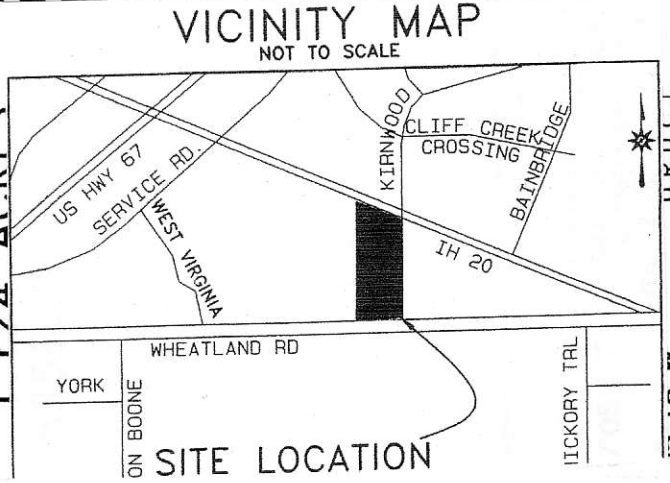
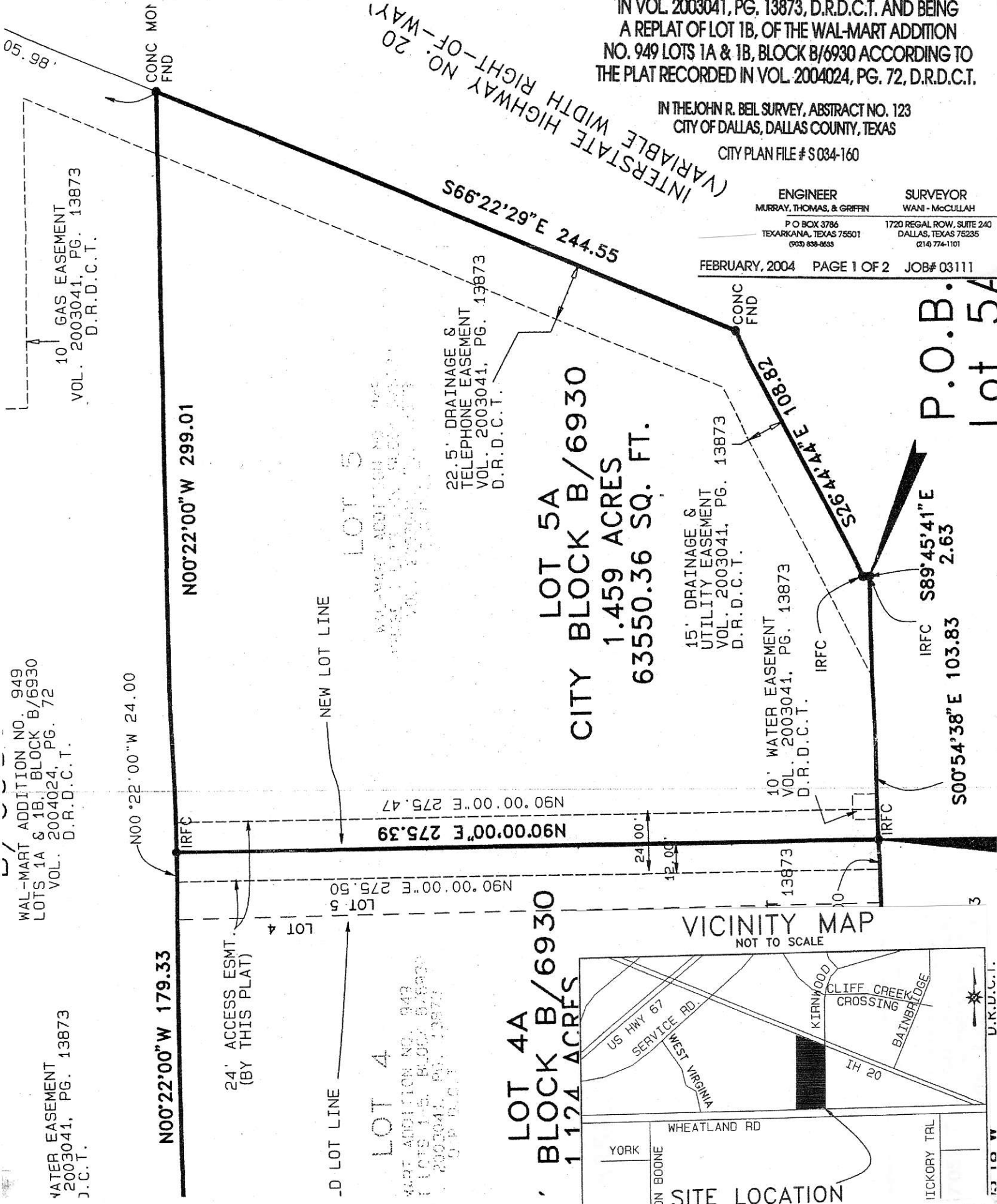
IN THE JOHN R. BEL SURVEY, ABSTRACT NO. 123
CITY OF DALLAS, DALLAS COUNTY, TEXAS

CITY PLAN FILE # S 034-160

ENGINEER
MURRAY, THOMAS, & GRIFFIN
P.O. BOX 3786
TEXARKANA, TEXAS 75501
(903) 838-8633

SURVEYOR
WANI - McCULLAH
1720 REGAL ROW, SUITE 240
DALLAS, TEXAS 75235
(214) 774-1101

FEBRUARY, 2004 PAGE 1 OF 2 JOB# 03111



P.O.B.
Lot 5A

WAL-MART ADDITION NO. 949
LOTS 1A & 1B, BLOCK B/6930
VOL. 2004024, PG. 72
D.R.D.C.T.

WATER EASEMENT
2003041, PG. 13873
D.R.D.C.T.

WAL-MART ADDITION NO. 949
LOTS 1-5, BLOCK B/6930
VOL. 2003041, PG. 13873
D.R.D.C.T.